

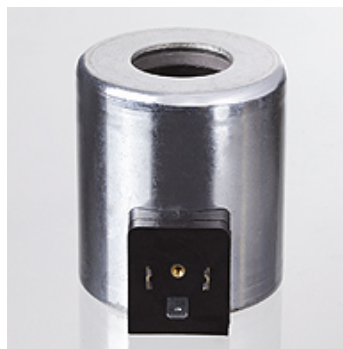
HK SP DFE

Coil for solenoid-operated directional control valve HK DFE

HANSA FLEX

Properties

Corresponding connectors HKSP664, HKSP666, HKSP667, HKSP668



Note

As far as AC coils are concerned, power input is considerably higher in the take-up phase than in the stopping phase.

These must therefore never be operated without a magnet core since there is a danger of overheating and the coil can burn through.

A similar effect occurs if valves with AC magnets are operated with extremely high pulse frequencies (On / Off). In such cases the coils, which are often in the vicinity of the high power input, can also overheat. For such applications the use of RC coils with rectifier plugs is recommended.

With DC coils extremely high power spikes can occur during powering down. We therefore recommend the use of plugs with protective circuits when using such coils.

Ordering information

Other types of coil on request

Item				
Identification	Nominal voltage +/- 10 %	Power consumption (W)	for valve type	Weight (kg)
HK DFE 052 12VDC	12 VDC	38	HK DFE 052	0,38
HK DFE 052 24VDC	24 VDC	38	HK DFE 052	0,38
HK DFE 100 12VDC	12 VDC	60	HK DFE 100	1,08
HK DFE 100 24VDC	24 VDC	60	HK DFE 100	1,08
HK DFE 100 192VDC	192 VDC	60	HK DFE 100	1,08
HK DFE 200 12VDC	12 VDC	60	HK DFE 200	0,98
HK DFE 200 20VDC	20 VDC	60	HK DFE 200	0,98
HK DFE 200 24VDC	24 VDC	60	HK DFE 200	0,98
HK DFE 200 192VDC	192 VDC	60	HK DFE 200	0,98

Accessories

HK SP DIN 43650 Electrical plug for solenoid coil DIN 43650 / ISO 4400

Spare part for following products

HK DFE 3	3/2-way directional solenoid valve for pipeline installation
HK DFE 6	6/2-way directional solenoid valve for pipeline installation