

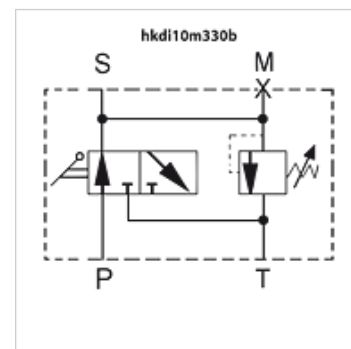
# HK DI 10

Safety and isolation block with manual relief

**HANSA FLEX**

## Properties

<b>Design</b>	Safety valve
<b>Operating pressure</b>	max. 400 bar
<b>Additional feature</b>	with TÜV certification
<b>Material</b>	Seal: VITON



## Note

Safety valve is preset; observe the maximum pressure when allocating to the corresponding accumulator!

## Description

The safety and isolation block is used to protect, shut off and discharge hydraulic accumulators. It is designed and manufactured in accordance with Directive 2014/68/EU (PED), Article 3 Para. 3 and takes into account the European safety regulations for the operation of hydraulic accumulators. Discharging the accumulator is done manually at a ball valve or a relief valve.

Viscosity of the fluids must lie within the following limits:

min. 10 mm<sup>2</sup>/s, max. 380 mm<sup>2</sup>/s

## Ordering information

Caution! Please order adapter for corresponding accumulator separately!

## Item

Identification	p max. (bar)	M	P	S	T	Weight (kg)
HK DI 10 M 100 B	100	1/4"	1/2"	M 33x2 cylinder connection	1/2"	2,9
HK DI 10 M 200 B	200	1/4"	1/2"	M 33x2 cylinder connection	1/2"	2,9
HK DI 10 M 210 B	211	1/4"	1/2"	M 33x2 cylinder connection	1/2"	2,9
HK DI 10 M 250 B	250	1/4"	1/2"	M 33x2 cylinder connection	1/2"	2,9
HK DI 10 M 330 B	330	1/4"	1/2"	M 33x2 cylinder connection	1/2"	2,4

pmax: Safety valve is preset, – observe the maximum pressure when allocating to the corresponding accumulator!

## Accessories

<b>HK AS</b>	Accumulator adapters for safety and isolation block
<b>HK MSM</b>	Lock nuts for diaphragm accumulator C