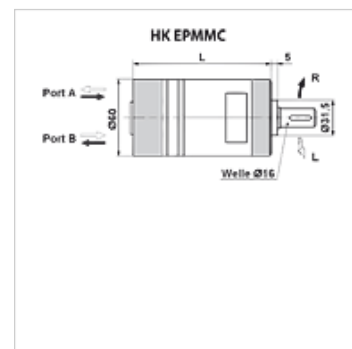
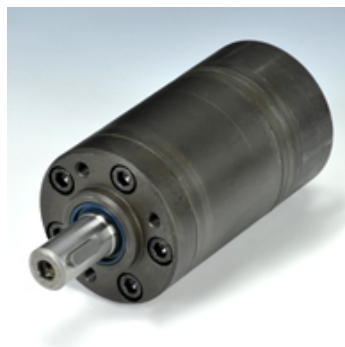


HK EPMM C

EPMM gerotor motor

Properties

Connection	Oil fittings at rear: A + B = G 3/8"; leak oil = G 1/4"
Design	Standard variant Type "C" with standard seal Shaft Ø 16mm
Intake and return pressure with leak oil line max.	140 bar



Note

It is generally recommended that the leak oil line is connected!

Item

Identification	Flow rate max. (L/min)	Dis- place- ment (cc)	Speed min. (rpm)	Speed max. (rpm)	Torque max. (N-m)	Pressure drop max. (bar)	Pmax. at 0-100 rpm (bar)	Pmax. at 100-300 rpm (bar)	Pmax. at 300-600 rpm (bar)	Pmax. at 600 rpm (bar)	L (mm)	Wei- ght (kg)
HK EPMM 008 C	16	8,2	50	1950	11	100	140	100	40	20	104	1,9
HK EPMM 012 C	20	12,9	40	1550	16	100	140	100	40	20	106	2,0
HK EPMM 020 C	20	20,0	30	1000	25	100	140	100	40	20	109	2,1
HK EPMM 032 C	20	31,8	30	630	40	100	140	100	40	-	114	2,2
HK EPMM 040 C	20	40,0	25	500	41	80	140	100	40	-	118	2,3
HK EPMM 050 C	20	50,0	20	400	45	70	140	100	-	-	122	2,4

max. pressure on shaft seal (without leak oil line) or pressure in leak oil line – Values for torque and pressure drop apply for continuous operation

Accessories

HK EPMM F Flange for gerotor motor

Spare parts

HK EP DS Seal kit for hydraulic planetary motor