

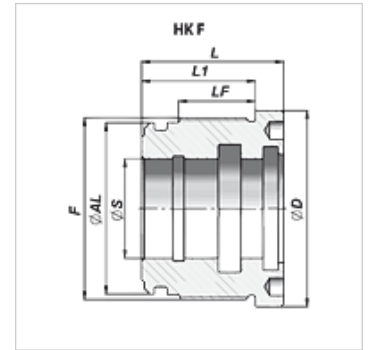
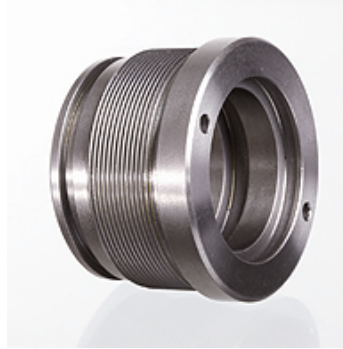
HK F

Guide housing for double-acting hydraulic cylinders 200 bar

HANSA FLEX

Properties

Material Cast steel UNI 5007-G26



Item

Identification	$\varnothing A$ (mm)	$\varnothing D$ (mm)	$\varnothing S$ (mm)	F	L (mm)	L1 (mm)	Weight (kg)	matching seal kit
HK F 32 16	32	40	16	M 36x1.5	40	32	1,0	
HK F 40 28	40	50	28	M 44x1.5	40	32	1,0	
HK F 40 30	40	50	30	M 44x1.5	40	32	1,0	
HK F 45 20	45	55	20	M 49x1.5	40	32	1,0	
HK F 45 30	45	55	30	M 49x1.5	40	32	1,0	
HK F 50 28	50	60	28	M 54x1.5	43	35	1,2	
HK F 63 25	63	73	25	M 68x1.5	50	40	1,3	
HK F 6336	63	73	36	M 68x1.5	50	40	1,2	
HK F 63 45	63	73	45	M 68x1.5	50	40	1,3	
HK F 125 80	125	145	80	M 130x2	92	80	5,0	
HK F 140 100	140	160	100	M 145x2	92	80	4,0	
HK F 150 100	150	170	100	M 155x2	102	90	4,5	

Accessories

HK DSF Packing set for hydraulic cylinder DSF