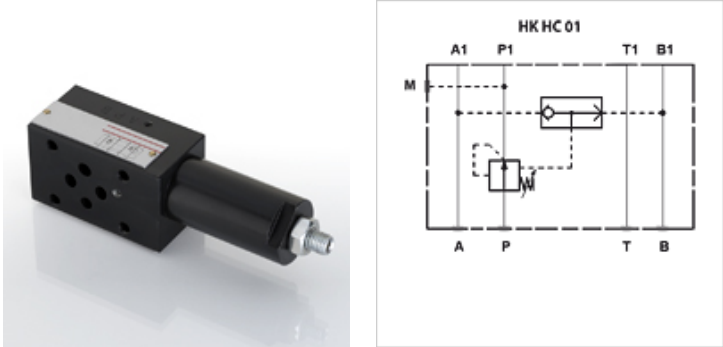


HK HC 01

2-way pressure balance



Properties	
Design	Sandwich body valve pilot-controlled
Operating pressure	max. 350 bar
Volumetric flow	max. 50 l/min
Connection	ISO/Cetop 03 size 6



Note
 These valves must be set according to the application.

Description
 Sandwich body valve for constructing sandwich arrangements with ISO/Cetop 03 size 6 valves
 The pressure balance maintains a constant pressure differential between connection P and connection A or B of the valve, to ensure that a constant flow rate is maintained in the event of pressure variations. The control pressure is diverted by the built-in shuttle valve.

Ordering information
 Further sandwich body valves available on request

Item					
Identification	acts in channel	Pressure setting range min. (bar)	Pressure setting range max. (bar)	Plate height (mm)	Weight (kg)
HK HC 011 30	P	5	32	40	1,4