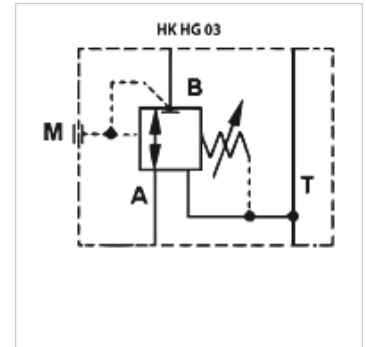


HK HG 03

Pressure reduction valve

Properties

Design	Sandwich body valve direct-controlled
Operating pressure	max. 350 bar
Volumetric flow	max. 40 l/min
Connection	ISO/Cetop 03 size 6



Note

These valves must be set according to the application.

Description

Sandwich body valve for constructing sandwich arrangements with ISO/Cetop 03 size 6 valves

Ordering information

Further sandwich body valves available on request

Item					
Identification	acts in channel	Pressure setting range min. (bar)	Pressure setting range max. (bar)	Plate height (mm)	Weight (kg)
HK HG 031 032	P	3	32	40	1,4
HK HG 031 100	P	20	100	40	1,4
HK HG 031 210	P	50	210	40	1,4
HK HG 033 032	A	3	32	40	1,4
HK HG 033 100	A	20	100	40	1,4
HK HG 033 210	A	50	210	40	1,4
HK HG 034 032	B	3	32	40	1,4
HK HG 034 100	B	20	100	40	1,4
HK HG 034 210	B	50	210	40	1,4