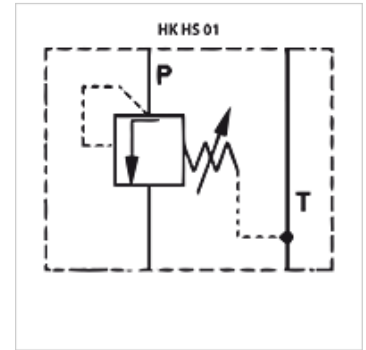


# HK HS 01

## Pressure sequence valve

### Properties

<b>Design</b>	Sandwich body valve direct-controlled
<b>Operating pressure</b>	max. 350 bar
<b>Volumetric flow</b>	max. 40 l/min
<b>Connection</b>	ISO/Cetop 03 size 6



### Note

These valves must be set according to the application.

### Description

Sandwich body valve for constructing sandwich arrangements with ISO/Cetop 03 size 6 valves

### Ordering information

Further sandwich body valves available on request

### Item

Identification	acts in channel	Pressure setting range min. (bar)	Pressure setting range max. (bar)	Plate height (mm)	Weight (kg)
HK HS 011 32	P	3	32	40	2,0
HK HS 011 100	P	20	100	40	2,0
HK HS 011 210	P	50	210	40	2,0

### Accessories

HK EBM AS	Proportional amplifier digital
-----------	--------------------------------