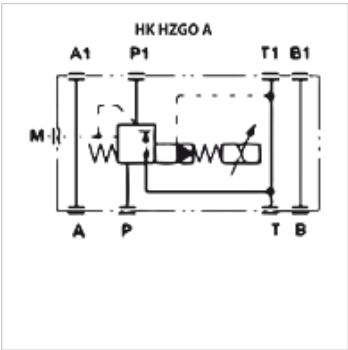


HK HZGO A 031

Proportional pressure reducing valve size 6



Properties	
Design	Proportional sandwich body valve pilot-controlled
Scope of supply	with coil, without plug
Operating pressure	max. 315 bar
Volumetric flow	max. 40 l/min
Connection	ISO/Cetop 03 size 6



Description

Sandwich body valve for constructing sandwich arrangements with ISO/Cetop 03 size 6 valves

Without integrated pressure transducer (a pcb Type HK EBM AS is required for control)

Completely encapsulated solenoid coils

Plate height: 50 mm

Response time < 50 ms

Hysteresis < 2%

Item						
Identification	acts in channel	Pressure setting range min. (bar)	Pressure setting range max. (bar)	Volumetric flow min. (L/min)	Volumetric flow max. (L/min)	Weight (kg)
HK HZGO A 031 315	P1	6	315	2,5	40,0	3,8

Accessories	
HK EBM AS	Proportional amplifier digital
HK SP DIN 43650	Electrical plug for solenoid coil DIN 43650 / ISO 4400