

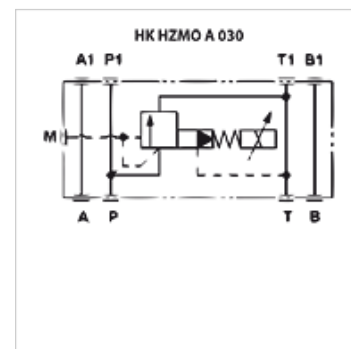
HK HZMO A 030

Proportional pressure relief valve size 6

HANSA FLEX

Properties

Design	Proportional sandwich body valve pilot-controlled
Scope of supply	with coil, without plug
Operating pressure	max. 315 bar
Volumetric flow	max. 40 l/min
Connection	ISO/Cetop 03 size 6



Description

Sandwich body valve for constructing sandwich arrangements with ISO/Cetop 03 size 6 valves

Without integrated pressure transducer (a pcb Type HK EBM AS is required for control)

Completely encapsulated solenoid coils

Plate height: 50 mm

Response time < 60 ms

Hysteresis < 1,5%

Item

Identification	acts in channel	Pressure setting range min. (bar)	Pressure setting range max. (bar)	Volumetric flow min. (L/min)	Volumetric flow max. (L/min)	Weight (kg)
HK HZMO A 030 210	P	6	210	2,5	40,0	2,8
HK HZMO A 030 315	P	6	315	2,5	40,0	2,8

Accessories

HK EBM AS	Proportional amplifier digital
HK SP DIN 43650	Electrical plug for solenoid coil DIN 43650 / ISO 4400