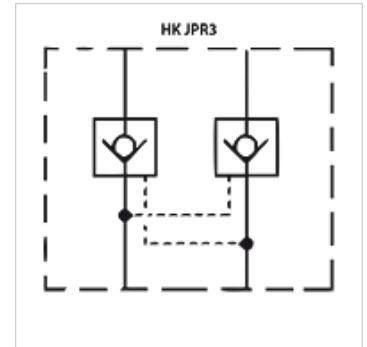


HK JPR3

Check valve

Properties

Design	Sandwich body valve
Operating pressure	max. 350 bar
Volumetric flow	max. 250 l/min
Connection	ISO/Cetop 08 NG25



Description

Sandwich body valve for constructing sandwich arrangements with ISO/Cetop 08 size 25 valves

Ordering information

Further sandwich body valves available on request

Item

Identification	acts in channel	Design	Plate height (mm)	Weight (kg)
HK JPR 312	A + B	pilot controlled, opening ratio 1: 17.1	80	9,9
HK JPR 313	A	pilot controlled, opening ratio 1: 17.1	80	9,9
HK JPR 314	B	pilot controlled, opening ratio 1: 17.1	80	9,9