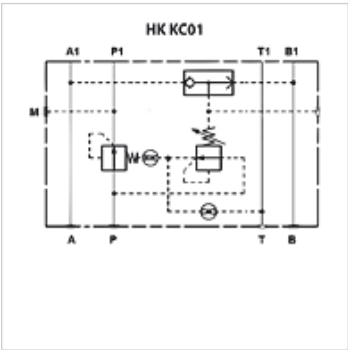
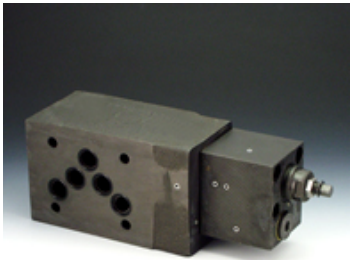


HK KC 01

2-way pressure balance



Properties	
Design	Sandwich body valve pilot-controlled
Operating pressure	max. 350 bar
Volumetric flow	max. 100 l/min
Connection	ISO/Cetop 05 size 10



Note
These valves must be set according to the application.

Description
Sandwich body valve for constructing sandwich arrangements with ISO/Cetop 05 size 10 valves
The pressure balance maintains a constant pressure differential between connection P and connection A or B of the valve, to ensure that a constant flow rate is maintained in the event of pressure variations. The control pressure is diverted by the built-in shuttle valve.

Ordering information
Further sandwich body valves available on request

Item					
Identification	acts in channel	Pressure setting range min. (bar)	Pressure setting range max. (bar)	Plate height (mm)	Weight (kg)
HK KC 011 30	P	5	35	60	2,8