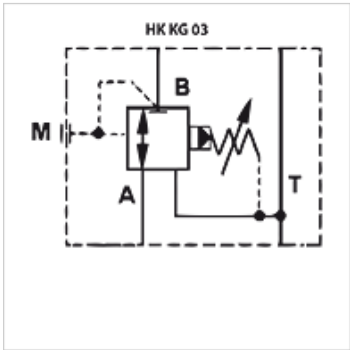
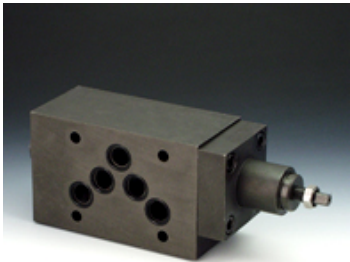


# HK KG 03

Pressure reduction valve



Properties	
Design	Sandwich body valve pilot-controlled
Operating pressure	max. 350 bar
Volumetric flow	max. 80 l/min
Connection	ISO/Cetop 05 size 10



**Note**  
These valves must be set according to the application.

**Description**  
Sandwich body valve for constructing sandwich arrangements with ISO/Cetop 05 size 10 valves

**Ordering information**  
Further sandwich body valves available on request

Item					
Identification	acts in channel	Pressure setting range min. (bar)	Pressure setting range max. (bar)	Plate height (mm)	Weight (kg)
HK KG 031 100	P	7	100	50	2,8
HK KG 031 210	P	7	210	50	2,8
HK KG 034 210	B	7	210	50	2,8