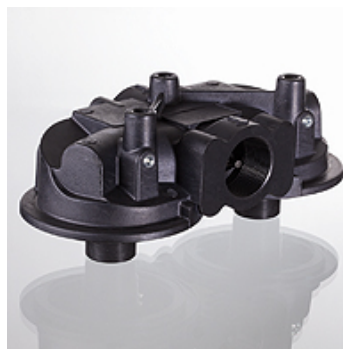


# HK MPS R/S

Filter head for spin-on filter MPS

## Properties

Material Aluminium



## Description

With these filter heads, spin-on filters can be used as return flow filters (R) or suction filters (S)

Opening pressure of bypass valve for return filter (R): 1.75 bar

Opening pressure of bypass valve for suction filter (S): 0.3 bar

## Item

| Identification     | Line connection       | Design            | suitable for filter type MPS | Weight (kg) |
|--------------------|-----------------------|-------------------|------------------------------|-------------|
| HK MPS 050 070 RG1 | G 3/4"                | as return filter  | 050-070                      | 0,36        |
| HK MPS 100 150 RG1 | G 1.1/4"              | as return filter  | 100-150                      | 1,00        |
| HK MPS 200 250 RG1 | G 1.1/2"              | as return filter  | 200-250                      | 1,22        |
| HK MPS 300 350 RG1 | G 1.1/2"              | as return filter  | 300-350                      | 2,86        |
| HK MPS 050 070 SG1 | G 3/4"                | as suction filter | 050-070                      | 0,36        |
| HK MPS 100 150 SG1 | G 1.1/4"              | as suction filter | 100-150                      | 1,00        |
| HK MPS 200 250 SG1 | G 1.1/2"              | as suction filter | 200-250                      | 1,22        |
| HK MPS 300 350 SF1 | 1.1/2" SAE 3000 PSI/M | as suction filter | 300-350                      | 2,86        |

## Spare part for following products

|          |                       |
|----------|-----------------------|
| HK MPS 1 | Spin-on filter type 1 |
| HK MPS 2 | Spin-on filter type 2 |
| HK MPS 3 | Spin-on filter type 3 |