

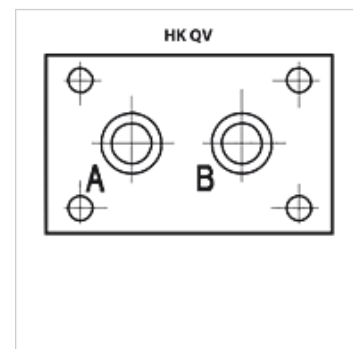
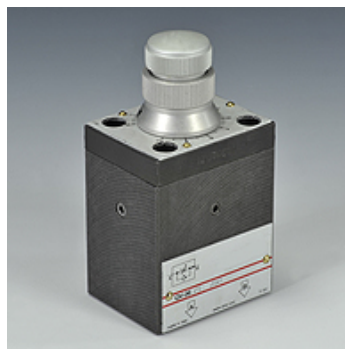
HK QV

Flow control valve for plate mounting Cetop

HANSA FLEX

Properties

Design	HK QV 06 - directly controlled
Operating pressure	max. 250 bar
Connection	ISO/Cetop 03 NG6 (only P + T)
Mounting	4 No. hex. socket head screw M5x70 12.9



Description

Flow rate is kept constant by a pressure balance

An integrated bypass non-return valve in the 2-way version permits flow in the opposite direction

Setting of the flow rate by means of adjustment knob

Item

Identification	Connections	Control range min. (L/min)	Control range max. (L/min)	max. return flow B-A max. (L/min)	Design	Pressure difference Δp (bar)	Weight (kg)
HK QV 06 1	ISO/Cetop 03-2 NG6	0,1	1,5	24	2-way	3	1,2
HK QV 06 6	ISO/Cetop 03-2 NG6	0,1	6,0	24	2-way	3	1,2
HK QV 06 11	ISO/Cetop 03-2 NG6	0,1	11,0	24	2-way	5	1,2
HK QV 06 16	ISO/Cetop 03-2 NG6	0,1	16,0	24	2-way	7	1,2
HK QV 06 24	ISO/Cetop 03-2 NG6	0,1	24,0	24	2-way	8	1,2

Δp = min. pressure differential for control function

Accessories

HK BHQ	Connection plate for flow control valve QV
HK BA QV	Mounting plate for flow control valve QV
HK M HK QV	Screw set for flow control valve Type HK QV
HK DHQ	High speed/creep speed unit for flow control valve QV