

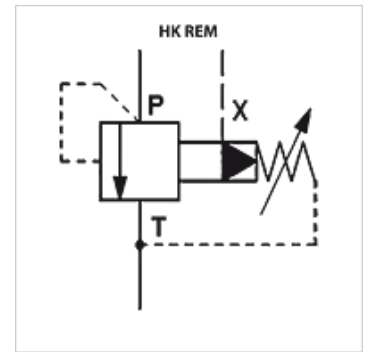
HK REM

Pressure relief valve with SAE connector

HANSA FLEX

Properties

Design	SAE flange connector (e.g. for direct fitting to pumps)
Scope of supply	incl. SAE flanges and M10 screws
Operating pressure	max. 350 bar



Description

Pilot-controlled pressure relief valve with damping plunger

Version with solenoid relief valve for pressure-free circulation of the pump see HK REM 24

Max. volumetric flow 600 l/min

For mineral- based hydraulic oil or synthetic fluids with comparable properties

Item

Identification	Connection	Pressure setting range min. (bar)	Pressure setting range max. (bar)	Volumetric flow max. (L/min)	Weight (kg)
HK REM 3 350	SAE flange 3/4"	8	350	200,0	6,6
HK REM 4 210	SAE flange 1"	7	210	400,0	6,8
HK REM 5 210	SAE flange 1.1/4"	7	210	600,0	8,2