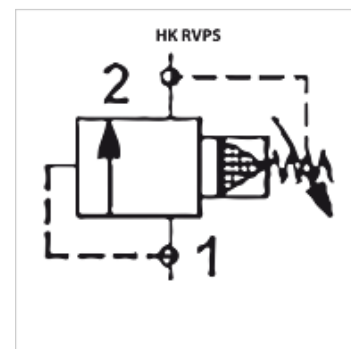


HK RVPS

Pressure relief valve RVPS

Properties

| | |
|--------------------|------------------|
| Design | pilot-controlled |
| Operating pressure | max. 350 bar |



Note

These valves must be set according to the application.
 Tightening torque for valve size 12 with Alu housing: 74-81 Nm
 Tightening torque for valve size 12 with Steel housing: 95-102 Nm

Description

Setting via setscrew

| Item | | | | | | |
|-------------------|--------------------------|--------------------------|------------------------------|-----------------------------------|---------------------------|-------------|
| Identification | Setting range min. (bar) | Setting range max. (bar) | Volumetric flow max. (L/min) | Screw-in housing | Screw-in thread | Weight (kg) |
| HK RVPS 12 NS0 15 | 7 | 105 | 230,0 | HK GEH 12 C1220 / HK GEH 34 C1220 | SAE 12/2 1.1/16"-12UNF-2B | 0,25 |
| HK RVPS 12 NS0 50 | 35 | 350 | 230,0 | HK GEH 12 C1220 / HK GEH 34 C1220 | SAE 12/2 1.1/16"-12UNF-2B | 0,25 |

Accessories

| | |
|---------------|---|
| HK GEH 20 AL | Aluminium housing for SAE 2-way cartridge valve |
| HK GEH 20 GGG | GGG40 housing for SAE 2-way cartridge valve |