

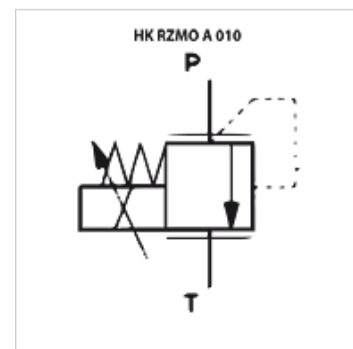
HK RZMO A 010

Proportional pressure relief valve size 6

HANSA FLEX

Properties

| | |
|---------------------------|---|
| Design | Proportional plate mounting valve direct-controlled |
| Scope of supply | with coil, without plug |
| Operating pressure | max. 315 bar |
| Volumetric flow | max. 4 l/min |
| Connection | ISO/Cetop 03 NG6 (only P + T) |



Description

Without integrated pressure transducer (a pcb Type HK EBM AS is required for control)

Completely encapsulated solenoid coils

Response time < 70 ms

Hysteresis < 1,5%

Item

| Identification | acts in channel | Pressure setting range min. (bar) | Pressure setting range max. (bar) | Volumetric flow max. (L/min) | Weight (kg) |
|-------------------|-----------------|--------------------------------------|--------------------------------------|---------------------------------|----------------|
| HK RZMO A 010 210 | P | 4 | 210 | 4,0 | 1,8 |

Accessories

| | |
|------------------------|--|
| HK EBM AS | Proportional amplifier digital |
| HK SP DIN 43650 | Electrical plug for solenoid coil DIN 43650 / ISO 4400 |
| HK M HK DH | Screw set for NG 6 valves type HK DH / DG4V3 |