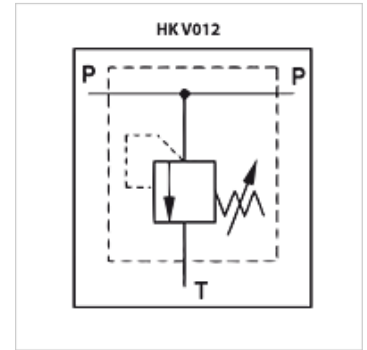


HK V0 12

Pressure relief valve V012

Properties

Design	direct-controlled
Material	Housing: Galvanised steel Inside parts of steel
Operating pressure	max. 300 bar



Note

These valves must be set according to the application.
No gauge port is provided for the 1/4" valves.

Item

Identification	Connections P + T	Pressure setting range bar	Q max. (L/min)	H (mm)	L (mm)	L1 (mm)	S (mm)	Weight (kg)
HK V0 12 050 03	G 1/4"	10 - 50	25	30	52	97	40	0,53
HK V0 12 180 03	G 1/4"	10 - 180	25	30	52	97	40	0,53
HK V0 12 300 03	G 1/4"	80 - 300	25	30	52	97	40	0,53
HK V0 12 050 06	G 3/8"	10 - 50	40	40	72	141	40	0,86
HK V0 12 100 06	G 3/8"	20 - 100	40	40	72	141	40	0,86
HK V0 12 180 06	G 3/8"	10 - 180	40	40	72	141	40	0,86
HK V0 12 250 06	G 3/8"	50 - 250	40	40	72	141	40	0,86
HK V0 12 300 06	G 3/8"	80 - 300	40	40	72	141	40	0,86
HK V0 12 050 08	G 1/2"	10 - 50	55	45	77	146	45	1,10
HK V0 12 100 08	G 1/2"	20 - 100	55	45	77	146	45	1,10
HK V0 12 180 08	G 1/2"	10 - 180	55	45	77	146	45	1,10
HK V0 12 250 08	G 1/2"	50 - 250	55	45	77	146	45	1,10
HK V0 12 300 08	G 1/2"	80 - 300	55	45	77	146	45	1,10
HK V0 12 050 12	G 3/4"	10 - 50	90	50	92	161	50	1,30
HK V0 12 100 12	G 3/4"	20 - 100	90	50	92	161	50	1,30
HK V0 12 180 12	G 3/4"	10 - 180	90	50	92	161	50	1,30
HK V0 12 250 12	G 3/4"	50 - 250	90	50	92	161	50	1,30
HK V0 12 300 12	G 3/4"	80 - 300	90	50	92	161	50	1,30