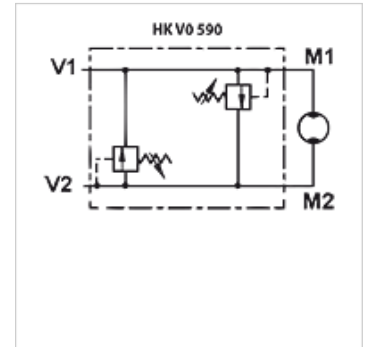


HK V0 590

Shock valve

Properties

Design	Direct flange mounting O-ring gasket
Material	Housing: Galvanised steel Inside parts of steel
Operating pressure	max. 300 bar
Use	For hydraulic planetary motors



Note

These valves must be set according to the application.

Ordering information

Springs for other setting ranges available as accessories

Item

Identification	Flow rate max. (L/min)	for motor	Connection	Setting range min. (bar)	Setting range max. (bar)	Weight (kg)
HK V0 590 0500	60	HK EPM, HK EPRM, HK HM BMP HD, HK HM BMR HD	G 1/2" - female thread	40	180	0,80
HK V0 590 0490	60	HK EPMS, HK HM BMS	G 1/2" - female thread	40	180	1,50
HK V0 590 0505	100	HK EPMT, HK HM BMT	G 3/4" - female thread	40	180	1,85

Accessories

HK VML	Spring for shock valve
HK M HK V0590	Screw kit for shock valve HK V0590