

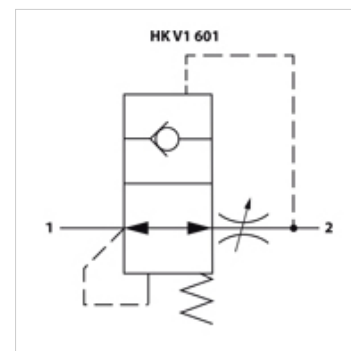
HK V1 601

Line break safety valve without housing

HANSA FLEX

Properties

Material	Steel
Operating pressure	max. 300 bar



Note

Note: Line break safety valves must be set according to the application!

The setting value "S" must correspond to 1.5 times the required volumetric flow for manually switched valves, and 2 times the required volumetric flow for electrically switched valves! Consider also the volumetric flow ratio with double-acting cylinders!

Item

Identification	A	B (mm)	C (mm)	D (mm)	E (mm)	Q max. (L/min)	Tightening torque (N·m)	Weight (kg)
HK V1 601 0400	G 1/4"	8,0	2,5	8,0	5,0	25	15,0	0,01
HK V1 601 0600	G 3/8"	10,5	3,5	10,5	5,0	50	20,0	0,02
HK V1 601 0800	G 1/2"	13,0	4,5	12,5	5,0	80	40,0	0,02
HK V1 601 1200	G 3/4"	18,0	6,0	16,0	7,0	140	80,0	0,05

Accessories

HK RV063	Valve housing for line break safety valve
HK LBS TOOL	Tool for line break safety valves