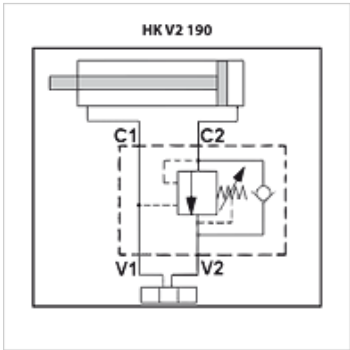


# HK V2 190

V2190 lowering valve



Properties	
Design	single-acting
Material	Housing: Galvanised steel Inside parts of steel
Operating pressure	max. 350 bar



**Note**

When using these valve with a plunger cylinder, an additional pressure relief valve must be installed in the V1 line that has to be matched to the load pressure of the cylinder. This pressure relief valve must discharge to the tank. These rate-of-drop valves must be set according to the application.

Item										
Identification	Thread	Q max. (L/min)	Level control ratio	H (mm)	L (mm)	L1 (mm)	L2 (mm)	L3 (mm)	S (mm)	Weight (kg)
HK V2 190 A600	G 3/8"	40	1:4	60	100	148	30	60	30	1,21
HK V2 190 A800	G 1/2"	60	1:4	60	100	148	35	65	30	1,15