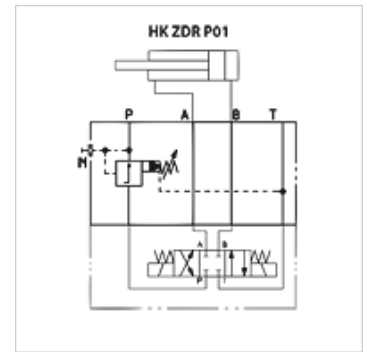


HK ZDR 01

Pressure reduction valve

Properties

Design	Sandwich body valve
Operating pressure	max. 350 bar
Volumetric flow	max. 80 l/min
Connection	ISO/Cetop 03 size 6



Note

These valves must be set according to the application.

Description

Sandwich body valve for constructing sandwich arrangements with ISO/Cetop 03 size 6 valves

Ordering information

Further sandwich body valves available on request

Item						
Identification	acts in channel	Pressure setting range min. (bar)	Pressure setting range max. (bar)	Design	Plate height (mm)	Weight (kg)
HK ZDR P01 1 S0 D1	P	7	70	pilot-controlled	40	1,4
HK ZDR P01 5 S0 D1	P	7	350	pilot-controlled	40	1,4
HK ZDR AR01 1 S0 D1	A	7	70	pilot-controlled, with non-return valve	40	1,4
HK ZDR AR01 5 S0 D1	A	7	315	pilot-controlled, with non-return valve	40	1,4
HK ZDR BR01 1 S0 D1	B	7	70	pilot-controlled, with non-return valve	40	1,4
HK ZDR BR01 5 S0 D1	B	7	315	pilot-controlled, with non-return valve	40	1,4