

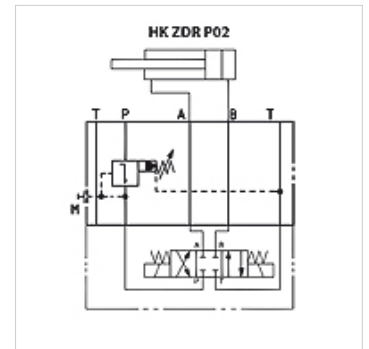
HK ZDR 02

Pressure reduction valve



Properties

Design	Sandwich body valve
Operating pressure	max. 350 bar
Volumetric flow	max. 120 l/min
Connection	ISO/Cetop 05 size 10



Note

These valves must be set according to the application.

Description

Sandwich body valve for constructing sandwich arrangements with ISO/Cetop 05 size 10 valves

Ordering information

Further sandwich body valves available on request

Item						
Identification	acts in channel	Pressure setting range min. (bar)	Pressure setting range max. (bar)	Design	Plate height (mm)	Weight (kg)
HK ZDR P02 1 S0 D1	P	7	70	pilot-controlled	50	2,8
HK ZDR P02 5 S0 D1	P	7	350	pilot-controlled	50	2,8
HK ZDR AR02 1 S0 D1	A	7	70	pilot-controlled, with non-return valve	50	2,8
HK ZDR AR02 5 S0 D1	A	7	315	pilot-controlled, with non-return valve	50	2,8
HK ZDR BR02 1 S0 D1	B	7	70	pilot-controlled, with non-return valve	50	2,8
HK ZDR BR02 5 S0 D1	B	7	315	pilot-controlled, with non-return valve	50	2,8