

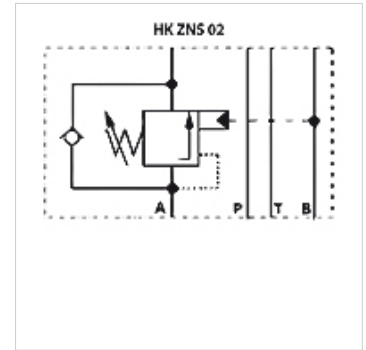
# HK ZNS 01

Overcentre valve

**HANSA FLEX**

## Properties

<b>Design</b>	Sandwich body valve
<b>Operating pressure</b>	max. 350 bar
<b>Volumetric flow</b>	max. 60 l/min
<b>Connection</b>	ISO/Cetop 03 size 6



## Note

These valves must be set according to the application.

## Description

Sandwich body valve for constructing sandwich arrangements with ISO/Cetop 03 size 6 valves

## Ordering information

Further sandwich body valves available on request

Item						
Identification	acts in channel	Pressure setting range min. (bar)	Pressure setting range max. (bar)	Design	Plate height (mm)	Weight (kg)
HK ZNS A01 2 S0 D1	A	70	175	Opening ratio 1 : 4.5	40	1,4
HK ZNS A01 5 S0 D1	A	140	350	Opening ratio 1 : 4.5	40	1,4
HK ZNS B01 2 S0 D1	B	70	175	Opening ratio 1 : 4.5	40	1,4
HK ZNS B01 5 S0 D1	B	140	350	Opening ratio 1 : 4.5	40	1,4
HK ZNS AB01 2 S0 D1	A + B	70	175	Opening ratio 1 : 4.5	40	1,4
HK ZNS AB01 5 S0 D1	A + B	140	350	Opening ratio 1 : 4.5	40	1,4