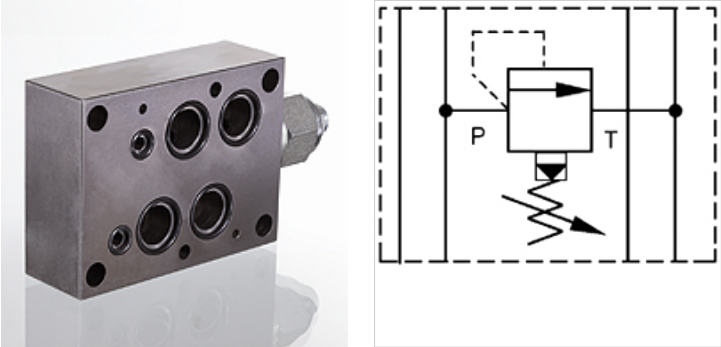


HK ZP 16 DB

Pressure relief valve



Properties	
Design	Sandwich body valve pilot-controlled
Operating pressure	max. 350 bar
Volumetric flow	max. 230 l/min
Connection	ISO/Cetop 07 NG16



Note
These valves must be set according to the application.

Description
Sandwich body valve for constructing sandwich arrangements with ISO/Cetop 07 size 16 valves

Ordering information
Further sandwich body valves available on request

Item					
Identification	acts in channel	Pressure setting range min. (bar)	Pressure setting range max. (bar)	Plate height (mm)	Weight (kg)
HK ZP 16 DB 12 P 15	P	7	105	40	3,4
HK ZP 16 DB 12 P 50	P	35	350	40	3,4
HK ZP 16 DB 12 A 15	A	7	105	40	3,4
HK ZP 16 DB 12 A 50	A	35	350	40	3,4