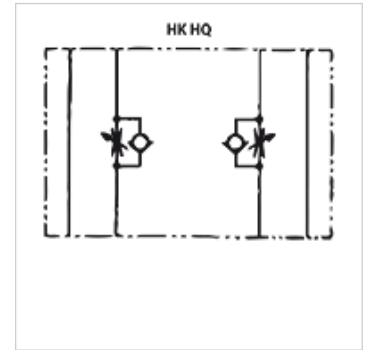


# HK ZRD 01

Flow control check valve

## Properties

<b>Design</b>	Sandwich body valve
<b>Operating pressure</b>	max. 350 bar
<b>Volumetric flow</b>	max. 80 l/min
<b>Connection</b>	ISO/Cetop 03 size 6



## Note

These valves must be set according to the application.

## Description

Sandwich body valve for constructing sandwich arrangements with ISO/Cetop 03 size 6 valves

## Ordering information

Further sandwich body valves available on request

Item				
Identification	acts in channel	Design	Plate height (mm)	Weight (kg)
HK ZRD ABA01 S0 D1	A + B	Drain control	40	1,4
HK ZRD AA01 S0 D1	A	Drain control	40	1,4
HK ZRD BA01 S0 D1	B	Drain control	40	1,4
HK ZRD ABZ01 S0 D1	A + B	Inlet control	40	1,4
HK ZRD AZ01 S0 D1	A	Inlet control	40	1,4
HK ZRD BZ01 S0 D1	B	Inlet control	40	1,4