

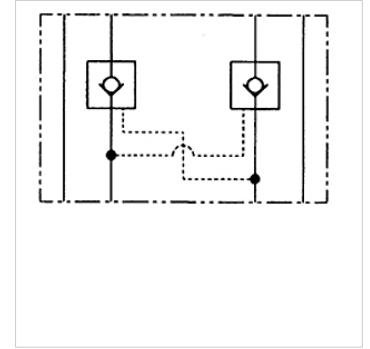
HK ZRV 01 / ZRE 01

Check valve

HANSA FLEX

Properties

Design	Sandwich body valve
Operating pressure	max. 350 bar
Connection	ISO/Cetop 03 size 6



Note

These valves must be set according to the application.

Description

Sandwich body valve for constructing sandwich arrangements with ISO/Cetop 03 size 6 valves

Ordering information

Further sandwich body valves available on request

Item					
Identification	acts in channel	Volumetric flow max. (L/min)	Design	Plate height (mm)	Weight (kg)
HK ZRV P01	P	40,0	direct-controlled	31	1,4
HK ZRE AB01 D1	A + B	60,0	pilot controlled, opening ratio 1: 6	40	1,4
HK ZRE A01 D1	A	60,0	pilot controlled, opening ratio 1: 6	40	1,4
HK ZRE B01 D1	B	60,0	pilot controlled, opening ratio 1: 6	40	1,4