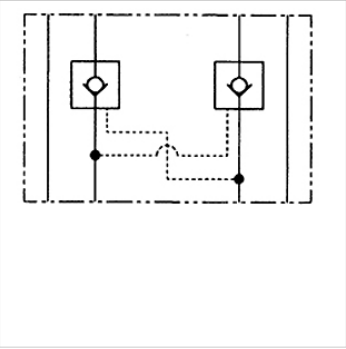


# HK ZRV 02 / ZRE 02

Check valve



Properties	
Design	Sandwich body valve
Operating pressure	max. 315 bar
Connection	ISO/Cetop 05 size 10



**Note**  
These valves must be set according to the application.

**Description**  
Sandwich body valve for constructing sandwich arrangements with ISO/Cetop 05 size 10 valves

**Ordering information**  
Further sandwich body valves available on request

Item					
Identification	acts in channel	Volumetric flow max. (L/min)	Design	Plate height (mm)	Weight (kg)
HK ZRV P02	P	100,0	direct-controlled	36	2,8
HK ZRE AB02 E1	A + B	120,0	pilot controlled, opening ratio 1: 6	50	2,8
HK ZRE A02 E1	A	120,0	pilot controlled, opening ratio 1: 6	50	2,8
HK ZRE B02 E1	B	120,0	pilot controlled, opening ratio 1: 6	50	2,8