

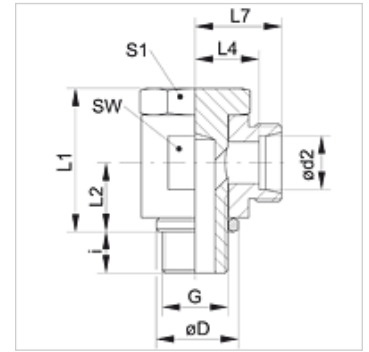
XSDR VA

Banjo fitting, throttle free, angle 90°

HANSA FLEX

Properties

Connection 1	BSP external thread, cylindrical
Sealing form 1	Edge sealing ring
Connection 2	metric cylindrical outer thread
Sealing form 2	24° inner cone
Design	Banjo coupling, throttle free
Construction	Angle 90°
Standard	DIN 2353 ISO 8434-1
Scope of supply	Socket (without union nut and cutting ring)
Material	Stainless steel



Item

Identification	Series	Operating pressure	Ø d2 (mm)	G	Ø D (mm)	i (mm)	L1 (mm)	L2 (mm)	L4 (mm)	L7 (mm)	AF (mm)	S1
XSDR 04 LL VA	LL	PN 100	4	G 1/8" -28	14	8	21	10,0	16,0	25,5	14	14
XSDR 06 LL VA	LL	PN 100	6	G 1/8" -28	14	8	21	10,0	14,5	26,0	14	14
XSDR 08 LL VA	LL	PN 100	8	G 1/8" -28	14	8	21	10,0	14,5	26,0	14	14
XSDR NW 04 HL VA	L	PN 315	6	G 1/8" -28	14	8	24	10,5	12,0	19,0	17	17
XSDR NW 06 HL VA	L	PN 315	8	G 1/4" -19	18	12	30	14,0	14,5	21,5	22	19
XSDR NW 08 HL VA	L	PN 315	10	G 1/4" -19	18	12	30	14,0	15,5	22,5	22	19
XSDR NW 10 HL 1/4 VA	L	PN 315	12	G 1/4" -19	22	12	30	15,0	15,5	22,5	22	22
XSDR NW 10 HL VA	L	PN 315	12	G 3/8" -19	22	12	36	16,5	18,0	25,0	27	24
XSDR NW 13 HL VA	L	PN 315	15	G 1/2" -14	26	14	45	21,5	21,5	28,5	32	30
XSDR NW 16 HL VA	L	PN 315	18	G 1/2" -14	26	14	45	21,5	21,0	28,5	32	30
XSDR NW 20 HL VA	L	PN 160	22	G 3/4" -14	32	16	53	24,0	27,5	35,0	41	36
XSDR NW 25 HL VA	L	PN 160	28	G 1" -11	39	18	66	30,5	32,0	39,5	50	46
XSDR NW 32 HL VA	L	PN 160	35	G 1.1/4" -11	49	20	76	35,5	36,0	46,5	60	55
XSDR NW 40 HL VA	L	PN 160	42	G 1.1/2" -11	55	22	87	40,5	40,5	51,5	70	60
XSDR NW 03 HS VA	S	PN 400	6	G 1/4" -19	18	12	30	14,0	16,5	23,5	22	19
XSDR NW 04 HS VA	S	PN 400	8	G 1/4" -19	18	12	30	14,0	16,5	23,5	22	19
XSDR NW 06 HS 1/4 VA	S	PN 400	10	G 1/4" -19	18	12	30	16,5	16,5	24,0	22	19
XSDR NW 06 HS VA	S	PN 400	10	G 3/8" -19	22	12	36	16,5	18,5	26,0	27	24
XSDR NW 08 HS VA	S	PN 400	12	G 3/8" -19	22	12	36	16,5	18,5	26,0	27	24
XSDR NW 10 HS VA	S	PN 400	14	G 1/2" -14	26	14	45	21,5	22,5	30,5	32	30
XSDR NW 13 HS VA	S	PN 400	16	G 1/2" -14	26	14	45	21,5	22,0	30,5	32	30
XSDR NW 16 HS VA	S	PN 400	20	G 3/4" -14	32	16	53	24,0	26,5	37,0	41	36
XSDR NW 20 HS VA	S	PN 250	25	G 1" -11	39	18	66	30,5	31,5	43,5	50	46
XSDR NW 25 HS VA	S	PN 250	30	G 1.1/4" -11	49	20	76	35,5	37,0	50,5	60	55
XSDR NW 32 HS VA	S	PN 250	38	G 1.1/2" -11	55	22	87	40,5	41,5	57,5	70	60

Product versions

XSDR Banjo fitting, throttle free, angle 90°, Steel