

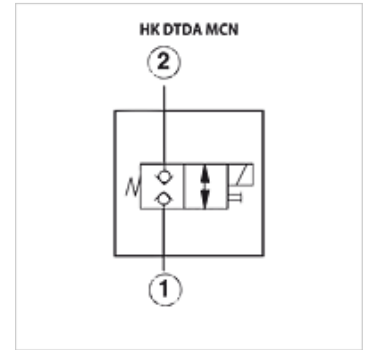
# HK DTDA

2/2-way solenoid-operated directional control valve DTDA

**HANSA FLEX**

## Properties

|                           |  |
|---------------------------|--|
| <b>Design</b>             | direct-controlled<br>with manual emergency operation |
| <b>Scope of supply</b>    | without coil or plug                                 |
| <b>Operating pressure</b> | max. 350 bar   |



## Description

Max. leakage 0.7cm<sup>3</sup>/min at 250 bar and 32cSt

## Ordering information

Please order solenoid coil separately (see accessories)

## Item

| Identification | Volumetric flow min.<br>(L/min) | A<br>(mm) | B<br>(mm) | C<br>(mm) | Screw-in housing          | Screw-in thread | AF<br>(mm) | Tightening torque<br>(N-m) | Design                           | Weight<br>(kg) |
|----------------|---------------------------------|-----------|-----------|-----------|---------------------------|-----------------|------------|----------------------------|----------------------------------|----------------|
| HK DTDA MCN    | 40,0                            | 89,0      | 35,0      | 37,0      | HK GAU / HK GAUS / HK GAV | T-13A           | 22         | 48,0                       | power-off closed, double locking | 0,5            |
| HK DTDA MHN    | 40,0                            | 89,0      | 35,0      | 37,0      | HK GAU / HK GAUS / HK GAV | T-13A           | 22         | 48,0                       | power-off open, double locking   | 0,5            |

## Accessories

|                   |  |
|-------------------|--|
| <b>HK SP 770</b>  | Coil for cartridge valve SUN   |
| <b>HK GEH GA</b>  | Valve housing for cartridge valve T-13A                                |
| <b>HK GEH GBA</b> | Housing sandwich plate with measurement connctn. for cart. valve T-13A |
| <b>HK GEH GBY</b> | Housing sandwich plate with measurement connctn. for cart. valve T-13A |
| <b>HK GEH MBJ</b> | Housing sandwich plate for cartridge valve T-31A                       |