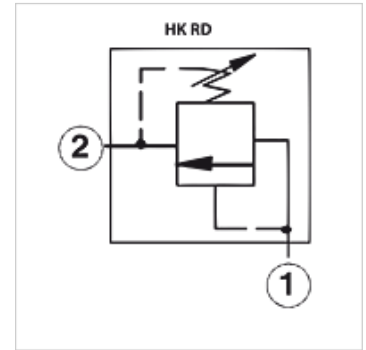


# HK RD

## Pressure relief valve RD

### Properties

Design	direct-controlled
Operating pressure	max. 350 bar



### Note

These valves must be set according to the application.

### Description

Only adjustable when pressure at port 1 < 50 bar  
connection 2 can be loaded with max. pressure  
Response time approx. 2 ms

### Item

Identification	Setting range min. (bar)	Setting range max. (bar)	Qmax (L/min)	A (mm)	B (mm)	Screw-in housing	Screw-in thread	AF (mm)	Tightening torque (N-m)	Weight (kg)
HK RD DA LAN	35	210	95	61,0	40,0	HK FAU / HK FAUS	T-10A	22	50,0	0,5
HK RD DA LWN	55	315	95	61,0	40,0	HK FAU / HK FAUS	T-10A	22	50,0	0,5
HK RD FA LAN	35	210	200	64,0	48,0	HK CAV / HK CAVS / HK CAW / HK CAWS	T-3A	28	65,0	0,5
HK RD FA LWN	55	315	200	64,0	48,0	HK CAV / HK CAVS / HK CAW / HK CAWS	T-3A	28	65,0	0,5

### Accessories

HK GEH CA	Valve housing for cartridge valve T-3A
HK GEH FA	Valve housing for cartridge valve T-10A
HK HR SUN	Hand wheel for cartridge valve SUN