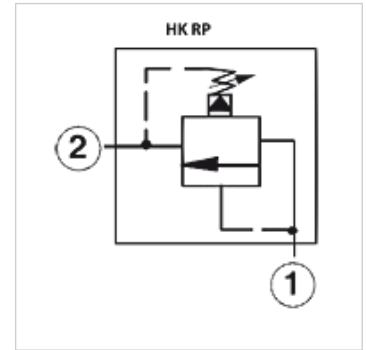


HK RP

Pressure relief valve RP

Properties

Design	pilot-controlled
Operating pressure	max. 350 bar



Note

These valves must be set according to the application.

Description

Only adjustable when pressure at port 1 < 50 bar
connection 2 can be loaded with max. pressure
Response time approx. 10 ms

Item

Identification	Setting range min. (bar)	Setting range max. (bar)	Qmax (L/min)	A (mm)	B (mm)	Screw-in housing	Screw-in thread	AF (mm)	Tightening torque (N-m)	Weight (kg)
HK RP EC LAN	7	210	95	51,0	40,0	HK FAU / HK FAUS	T-10A	22	50,0	0,5
HK RP EC LWN	10	315	95	51,0	40,0	HK FAU / HK FAUS	T-10A	22	50,0	0,5
HK RP GC LAN	7	210	200	54,0	48,0	HK CAV / HK CAVS / HK CAW / HK CAWS	T-3A	28	65,0	0,5
HK RP GC LWN	10	315	200	54,0	48,0	HK CAV / HK CAVS / HK CAW / HK CAWS	T-3A	28	65,0	0,5

Accessories

HK GEH CA	Valve housing for cartridge valve T-3A
HK GEH FA	Valve housing for cartridge valve T-10A
HK HR SUN	Hand wheel for cartridge valve SUN