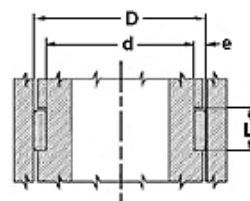


Properties

Sliding speed max.	1,0 m/s
Pressure resistance as DIN 53454 (N/mm ²)	350 N/mm ²
Surface pressure	50 N/mm ²
Temp. min.	-40 °C
Temp. max.	130 °C
Media	Mineral oils Water emulsions
Installation	insert into the groove
Material	Guide ring: Polyester resin - synthetic fibre fabric laminate with graphite



Schnittmöglichkeiten / Cutting options



Toleranz / Tolerance		
D	d	L
H9	f8	+0,20 0

Note

Calculation of shear force; $F = p \times D \times L \times n$

F= maximum shear force (N)

p = maximum surface pressure (N/mm²)

D x L= projected area (mm²)

n= quantity of rings

Description

Available by the metre.

Easy working of the fitting groove and assembly.

Low coefficient of friction.

High load-bearing capacity.

Ordering information

For special operating conditions (fluid, temperature, pressure ...) please contact us.

Item

Identification	e (mm)	L (mm)
GTH 25 056	2,5	5,6
GTH 25 097	2,5	9,7
GTH 25 150	2,5	15,0
GTH 25 200	2,5	20,0
GTH 25 250	2,5	25,0
GTH 30 097	3,0	9,7
GTH 30 128	3,0	12,8
GTH 30 150	3,0	15,0
GTH 30 192	3,0	19,2
GTH 30 200	3,0	20,0
GTH 30 250	3,0	25,0
GTH 30 300	3,0	30,0
GTH 35 300	3,5	30,0
GTH 40 097	4,0	9,7
GTH 40 128	4,0	12,8
GTH 40 150	4,0	15,0
GTH 40 200	4,0	20,0
GTH 40 250	4,0	25,0