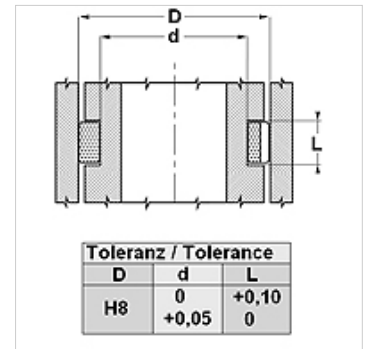
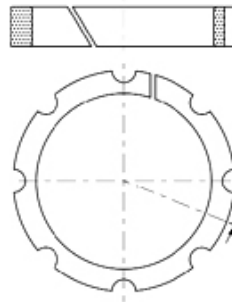


### Properties

<b>Sliding speed max.</b>	5,0 m/s
<b>Surface pressure</b>	at 20°C 15 N/mm <sup>2</sup> ; at 100°C 10 N/mm <sup>2</sup>
<b>Temp. min.</b>	-30 °C
<b>Temp. max.</b>	110 °C
<b>Media</b>	Mineral oils Water emulsions
<b>Installation</b>	insert into the groove
<b>Material</b>	acetal resin + glass fibre



### Note

Calculation of shear force;  $F = p \times D \times L \times n$   
 $F$  = maximum shear force (N)  
 $p$  = maximum surface pressure (N/mm<sup>2</sup>)  
 $D \times L$  = projected area (mm<sup>2</sup>)  
 $n$  = quantity of rings

### Description

Easy working of the fitting groove and assembly.  
 High load-bearing capacity for plunger cylinders.  
 Note! Cannot be used as stop.

### Item

Identification	D (mm)	d (mm)	L (mm)
WP 25	25	15	10,0
WP 30	30	20	13,0
WP 35	35	25	13,0
WP 40	40	30	13,0
WP 45	45	35	13,0
WP 55	55	45	16,0
WP 60	60	45	16,0
WP 65	65	55	16,0
WP 75	75	65	16,0
WP 85	85	75	16,0