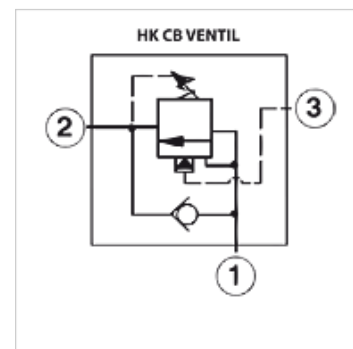


Properties

Operating pressure max. 350 bar



Note

These valves must be set according to the application.

Description

load-holding function to 210bar (with setting 280 bar, opening of load pressure 0 bar)

Load-dependent opening for controlling negative (dragging) loads

back pressure on connection 2 can impair the functioning of the valve

closing pressure $\geq 85\%$ of the opening pressure

Note! Relief function by screwing in the spindle

Item											
Identification	Pressure setting range min.	Pressure setting range max.	Qm-ax	A	B	Screw-in housing	Screw-in thread	AF	Tightening torque	Level control ratio	Weight
	(bar)	(bar)	(L/min)	(mm)	(mm)			(mm)	(N-m)		(kg)
HK CB BY LHN	70	280	20	50,0	35,0	HK EBAM / HK EBAT / HK EBY / HK EBYS / HK YEU	T-11A	22	50,0	1:2	0,5
HK CB CA LIN	25	105	60	50,0	35,0	HK EBAM / HK EBAT / HK EBY / HK EBYS / HK YEU	T-11A	22	50,0	1:3	0,5
HK CB CA LHN	70	280	60	50,0	35,0	HK EBAM / HK EBAT / HK EBY / HK EBYS / HK YEU	T-11A	22	50,0	1:3	0,5
HK CB EA LIN	25	105	120	61,0	35,0	HK BCV / HK BCVS / HK BCW / HK BCWS / HK YAV	T-2A	28	65,0	1:3	0,5
HK CB EA LHN	70	280	120	61,0	35,0	HK BCV / HK BCVS / HK BCW / HK BCWS / HK YAV	T-2A	28	65,0	1:3	0,5

Accessories

HK GEH BC	Valve housing for cartridge valve T-2A
HK GEH EBA	Housing sandwich plate with measurement connctn. for cart. valve T-11A
HK GEH EBY	Housing sandwich plate with measurement connctn. for cart. valve T-11A
HK GEH YA	Valve housing for cartridge valve T-2A
HK GEH YE	Valve housing for cartridge valve T-11A
HK HR SUN	Hand wheel for cartridge valve SUN