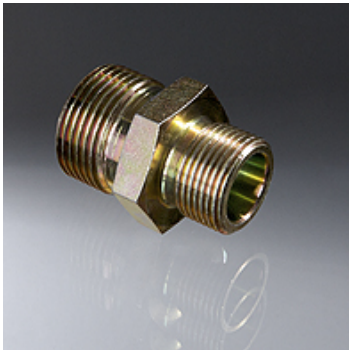


XV G

Cone double nipple



Properties	
Application	in construction, mining and tunnel building
Connection 1	BSP external thread, cylindrical
Connection 2	BSP cylindrical external threads
Media	Compressed air, water
Material	Steel



Description

fits conical nozzle threaded connections

Item						
Identification	G1	G2	Length (mm)	Cone	AF (mm)	Operating pressure
XV 1-3/4	G 1" -11	G 3/4" -14	51	1:3 / 1:4	36	PN 25

G1, G2 = Threads for connections 1 and 2 – AF = Width across flats