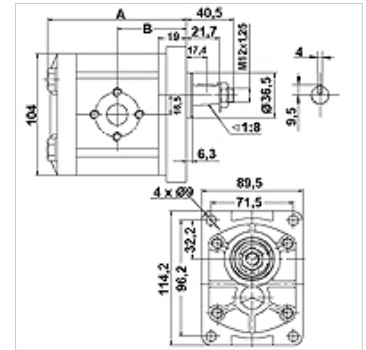


HK CBTF

Gear pump, size 2 CBTF

Properties

Design	Economy variant Front flange and end cover in cast steel
Pitch circle pressure side	30 / M6
Pitch circle suction side	30/M6 up to 8.00 VFU ccm 40/M8 up to 10.00 VFU ccm
Material	Housing: Aluminium Front flange, end cover: Cast steel



Description

European standard pump – hole pattern 96.2 x 71.5 – dia. 36.5 – taper 1:8 – flange fitting

Item

Identification	VFU (cc)	p1 max. (bar)	p2 max. (bar)	p3 max. (bar)	A (mm)	B (mm)	Direction of rotation	Speed min. (rpm)	Speed max. (rpm)	Weight (kg)
HK CBTF 304 F1Z 0A	4	200	230	250	99	45	clockwise rotating	600	3000	3,3
HK CBTF 304 F1Z LA	4	200	230	250	99	45	anti-clockwise rotating	600	3000	3,3
HK CBTF 306 F1Z 0A	6	200	230	250	101	46	clockwise rotating	600	3000	3,4
HK CBTF 306 F1Z LA	6	200	230	250	101	46	anti-clockwise rotating	600	3000	3,4
HK CBTF 308 F1Z 0A	8	200	230	250	104	48	clockwise rotating	600	3000	3,5
HK CBTF 308 F1Z LA	8	200	230	250	104	48	anti-clockwise rotating	600	3000	3,5
HK CBTF 310 F1Z 0A	10	200	230	250	107	49	clockwise rotating	600	3000	3,6
HK CBTF 310 F1Z LA	10	200	230	250	107	49	anti-clockwise rotating	600	3000	3,6
HK CBTF 314 F1Z 0A	14	200	230	250	113	52	clockwise rotating	600	3000	3,8
HK CBTF 314 F1Z LA	14	200	230	250	113	52	anti-clockwise rotating	600	3000	3,8
HK CBTF 316 F1Z 0A	16	200	230	250	117	54	clockwise rotating	600	3000	3,9
HK CBTF 316 F1Z LA	16	200	230	250	117	54	anti-clockwise rotating	600	3000	3,9
HK CBTF 320 F1Z 0A	20	200	230	250	123	57	clockwise rotating	600	3000	4,0
HK CBTF 320 F1Z LA	20	200	230	250	123	57	anti-clockwise rotating	600	3000	4,0
HK CBTF 325 F1Z 0A	25	200	230	250	131	61	clockwise rotating	600	3000	4,0
HK CBTF 325 F1Z LA	25	200	230	250	131	61	anti-clockwise rotating	600	3000	4,0

VFU = conveying volume per revolution – p1 = continuous pressure – p2 = working pressure – p3 = maximum pressure

Accessories

WDA	Pump connection (3 hole), angle 90°
WDS	Pump connection (3 hole), angle 90°
F	Pump connection (4 hole)
FE	Pump connection (4 hole)

Additional elements

HK MPK Selection chart for motor/pump combination for gear pumps