

# SRS 0 TS

Mounting rail, single and double pipe clamp

**HANSA FLEX**

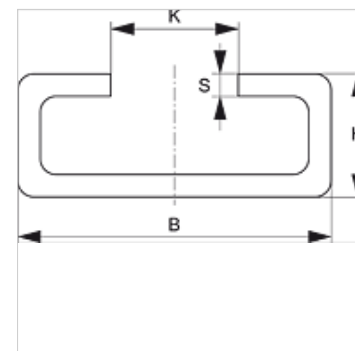
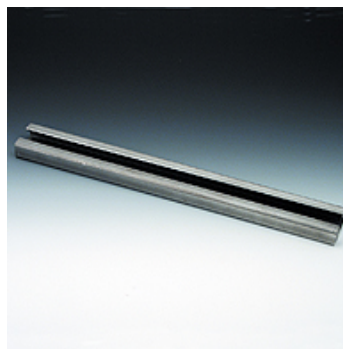
## Properties

**Design** for single and twin pipe clamps

**Series** light

**Standard** DIN 3015-1

**Material** Steel (bright)



## Description

for all clamp sizes from light series and the double pipe clamp.

## Item

| Identification | B<br>(mm) | H<br>(mm) | K<br>(mm) | S<br>(mm) | Length<br>(m) |
|----------------|-----------|-----------|-----------|-----------|---------------|
| SRS TS 11-1    | 28        | 11        | 11,4      | 2         | 1,00          |
| SRS TS 11-2    | 28        | 11        | 11,4      | 2         | 2,00          |
| SRS TS 14-1    | 28        | 14        | 11,4      | 2         | 1,00          |
| SRS TS 14-2    | 28        | 14        | 11,4      | 2         | 2,00          |
| SRS TS 14-3    | 28        | 14        | 11,4      | 2         | 3,00          |
| SRS TS 30-1    | 28        | 30        | 11,4      | 2         | 1,00          |
| SRS TS 30-2    | 28        | 30        | 11,4      | 2         | 2,00          |

## Product versions

**SRS TS V4** Mounting rail, single and double pipe clamp, Stainless steel 1.4571

**SRS TS VZ** Mounting rail, single and double pipe clamp, electro galvanised

## Additional element for following products

**B** Configuration of group B

**A 1-6** Configuration of group A 1-6

**A 0** Configuration of group A 0