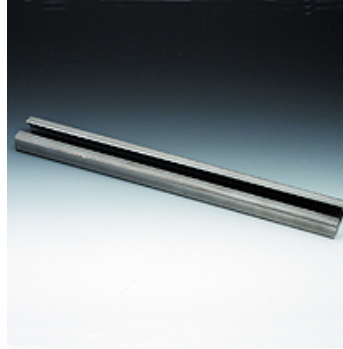


SRS TS

Mounting rail, single and double pipe clamp

Properties

Design	for single and twin pipe clamps
Series	light
Standard	DIN 3015-1
Material	Steel (bright)



Description

for all clamp sizes from light series and the double pipe clamp.

Item

Identification	B (mm)	H (mm)	K (mm)	Length (m)	S (mm)
SRS TS 11-1	28,0	11	11,4	1,00	2,0
SRS TS 11-2	28,0	11	11,4	2,00	2,0
SRS TS 14-1	28,0	14	11,4	1,00	2,0
SRS TS 14-2	28,0	14	11,4	2,00	2,0
SRS TS 14-3	28,0	14	11,4	3,00	2,0
SRS TS 30-1	28,0	30	11,4	1,00	2,0
SRS TS 30-2	28,0	30	11,4	2,00	2,0

Product versions

SRS TS V4	Mounting rail, single and double pipe clamp, Stainless steel 1.4571
SRS TS VZ	Mounting rail, single and double pipe clamp, electro galvanised

Additional element for following products

B	Configuration of group B
A 1-6	Configuration of group A 1-6
A 0	Configuration of group A 0