

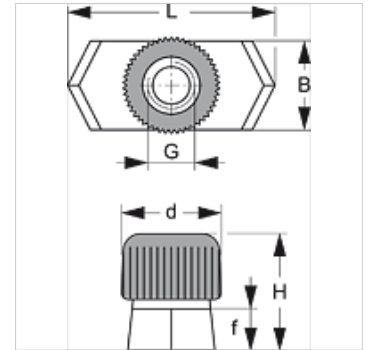
SRS 0 SM

Mounting rail nut, single pipe clamp

HANSA FLEX

Properties

Design	for single and twin pipe clamps
Series	light
Standard	DIN 3015-1
Material	Steel and rubber
Surface	electro galvanised



Description

for all clamp sizes from light series and clamp size 1 of the double pipe clamp.

Item

Identification	Clamp size	B (mm)	e1 (mm)	f (mm)	G	H (mm)	L (mm)
SRS SM	0 - 6	10,4	12	5	M 6	14,5	25,4

Product versions

SRS SM V4 Mounting rail nut, Stainless steel 1.4571

Additional element for following products

A 1-6	Configuration of group A 1-6
A 0	Configuration of group A 0