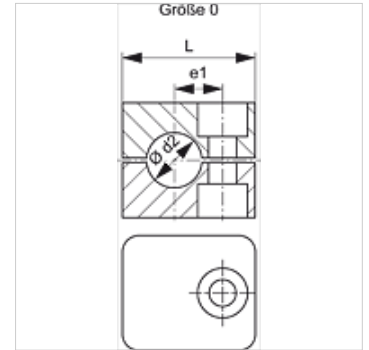


SRS 0 PP

Pipe clamp, light series

Properties

Design	Pipe clamp
Construction type	Inside of clamp with web
Series	light
Standard	DIN 3015-1
Temp. min.	-30 °C
Temp. max.	90 °C
Material	Polypropylene



Description

Webs in the inner surface of the clamps dampen impacts and vibrations and absorb forces along the pipe axis.
A gap between the two halves pretensions the pipe.

Ordering information

1 piece = 2 halves of clamp

Item

Identification	External pipe Ø d2 (mm)	External pipe Ø d2	Clamp size	e1 (mm)	H (mm)	L (mm)	S1 (mm)
SRS 0106 PP	6,0	-	0	10	27	28	0,6
SRS 0106.4 PP	6,4	1/4"	0	10	27	28	0,6
SRS 0108 PP	8,0	5/16"	0	10	27	28	0,6
SRS 0109.5 PP	9,5	3/8"	0	10	27	28	0,6
SRS 0110 PP	10,0	-	0	10	27	28	0,6
SRS 0112 PP	12,0	-	0	10	27	28	0,6

Product versions

SRS 0 PA Pipe clamp, light series, Polyamide 6

Additional element for following products

A 0	Configuration of group A 0
A 0 A	Configuration of group A 0 composition