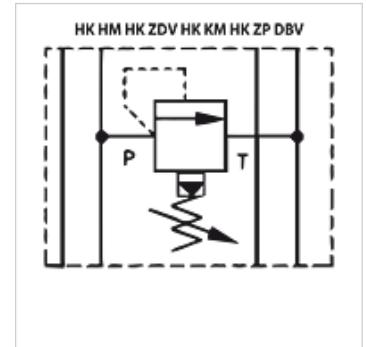


# HK HM 01

## Pressure relief valve

### Properties

<b>Design</b>	Sandwich body valve pilot-controlled
<b>Operating pressure</b>	max. 350 bar
<b>Volumetric flow</b>	max. 50 l/min
<b>Connection</b>	ISO/Cetop 03 size 6



### Note

These valves must be set according to the application.

### Description

Sandwich body valve for constructing sandwich arrangements with ISO/Cetop 03 size 6 valves

### Ordering information

Further sandwich body valves available on request

Item					
Identification	acts in channel	Pressure setting range min. (bar)	Pressure setting range max. (bar)	Plate height (mm)	Weight (kg)
HK HM 011 100	P	5	100	40	1,4
HK HM 011 210	P	5	210	40	1,4
HK HM 011 350	P	5	350	40	1,4
HK HM 012 100	A + B	5	100	40	1,4
HK HM 012 210	A + B	5	210	40	1,4
HK HM 012 350	A + B	5	350	40	1,4
HK HM 013 100	A	5	100	40	1,4
HK HM 013 210	A	5	210	40	1,4
HK HM 013 350	A	5	350	40	1,4
HK HM 014 100	B	5	100	40	1,4
HK HM 014 210	B	5	210	40	1,4
HK HM 014 350	B	5	350	40	1,4