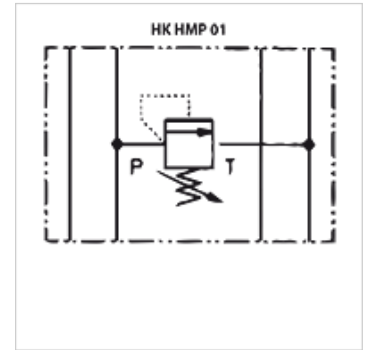


HK HMP 01

Pressure relief valve

Properties

Design	Sandwich body valve direct-controlled
Operating pressure	max. 350 bar
Volumetric flow	max. 35 l/min
Connection	ISO/Cetop 03 size 6



Note

These valves must be set according to the application.

Description

Sandwich body valve for constructing sandwich arrangements with ISO/Cetop 03 size 6 valves

Ordering information

Further sandwich body valves available on request

Item					
Identification	acts in channel	Pressure setting range min. (bar)	Pressure setting range max. (bar)	Plate height (mm)	Weight (kg)
HK HMP 011 100	P	3	100	40	1,4
HK HMP 011 210	P	10	210	40	1,4
HK HMP 011 350	P	3	350	40	1,4
HK HMP 012 100	A + B	3	100	40	1,4
HK HMP 012 210	A + B	10	210	40	1,4
HK HMP 012 350	A + B	15	350	40	1,4
HK HMP 013 100	A	3	100	40	1,4
HK HMP 013 210	A	10	210	40	1,4
HK HMP 013 350	A	15	350	40	1,4
HK HMP 014 350	B	15	350	40	1,4