

# G HB IR-K

## Screw-on socket

### Properties

**Connection 1** BSP external thread, cylindrical

**Sealing form 1** thread seal

**Connection 2** BSPT conical inner thread

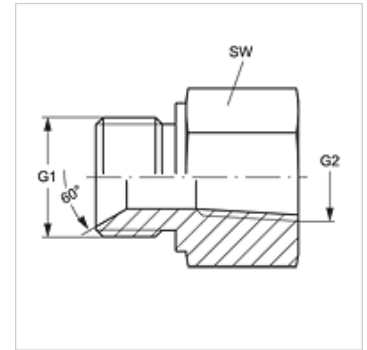
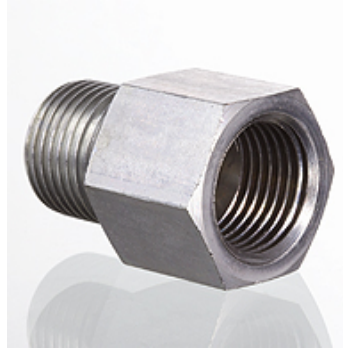
**Sealing form 2** thread seal

**Design** Screw-on socket

**Construction** straight

**Material** Steel

**Surface** electro galvanised



### Item

Identification	G1	G2	AF (mm)
<b>G HB 04 IRK</b>	G 1/4" -19	R 1/4" K	19
<b>G HB 06 IRK</b>	G 3/8" -19	R 3/8" K	22
<b>G HB 08 IRK</b>	G 1/2" -14	R 1/2" K	27

AF = Width across flats