

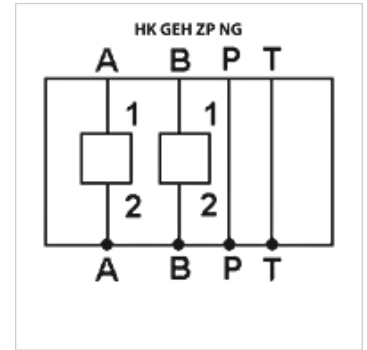
# HK GEH ZP NG

Steel housing sandwich plate NG6/10 for SAE 2-way cartridge valve



## Properties

<b>Sealing form</b>	O-ring seal
<b>Design</b>	functions in channel A + B optional sealing of a cartridge bore with blank plug (*)
<b>Material</b>	Steel
<b>Operating pressure</b>	max. 350 bar



## Note

(\*) matching blank plugs  
for SAE08/2 : PLUG O 08  
for SAE10/2 : PLUG O 10  
for SAE12/2 : PLUG O 12

## Item

Identification	Connection	C (mm)	D (mm)	E (mm)	F (mm)	G (mm)	for valve type	Weight (kg)
HK ZP NG6 C08 AB	Cetop 03 NG 6	45	50	25	100	45	HK EMDV08 - SAE8/2 3/4-16UNF-2B	1,3
HK ZP NG6 C10 AB	Cetop 03 NG 6	45	50	25	100	45	HK EMDV10 - SAE10/2 7/8-14UNF-2B	1,2
HK ZP NG10 C12 AB	Cetop 05 NG 10	75	50	31	160	52	HK EMDV12 - SAE12/2 1.1/16-12UNF-2B	2,1

## Accessories

VERSCHLUSS O Blanking socket