

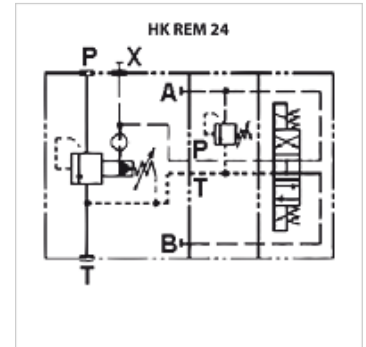
HK REM 24

Pressure relief valve with SAE connection and relief valve

HANSA FLEX

Properties

Design	SAE flange connector (e.g. for direct fitting to pumps) with magnetic relief valve 24 V; relief with magnet at zero current
Scope of supply	incl. SAE flanges and M10 screws
Operating pressure	max. 350 bar



Note

These valves must be set according to the application.

Description

Pilot-controlled pressure relief valve with damping plunger
2 pressure adjustment ranges (same min / max values)
Max. volumetric flow 600 l/min
For mineral- based hydraulic oil or synthetic fluids with comparable properties

Item					
Identification	Connection	Pressure setting range min. (bar)	Pressure setting range max. (bar)	Volumetric flow max. (L/min)	Weight (kg)
HK REM 3 20 350 350 24	SAE flange 3/4"	8	350	200,0	9,2
HK REM 4 20 210 210 24	SAE flange 1"	7	210	400,0	9,2
HK REM 5 20 210 210 24	SAE flange 1.1/4"	7	210	600,0	9,2

Accessories

HK SP DIN 43650 Electrical plug for solenoid coil DIN 43650 / ISO 4400