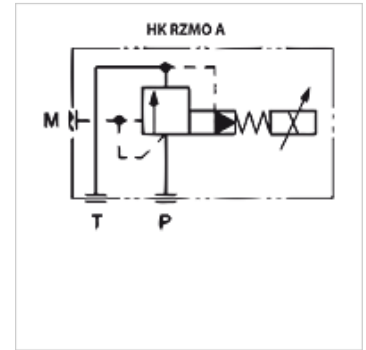


HK RZMO A 030

Proportional pressure relief valve size 6

Properties

| | |
|---------------------------|--|
| Design | Proportional plate mounting valve pilot-controlled |
| Scope of supply | with coil, without plug |
| Operating pressure | max. 315 bar |
| Volumetric flow | max. 40 l/min |
| Connection | ISO/Cetop 03 size 6 |



Description

Without integrated pressure transducer (a pcb Type HK EBM AS is required for control)
Completely encapsulated solenoid coils
Response time < 60 ms
Hysteresis < 1,5%

Item

| Identification | acts in channel | Pressure setting range min. (bar) | Pressure setting range max. (bar) | Volumetric flow min. (L/min) | Volumetric flow max. (L/min) | Weight (kg) |
|-------------------|-----------------|--------------------------------------|--------------------------------------|---------------------------------|---------------------------------|----------------|
| HK RZMO A 030 315 | P | 6 | 315 | 2,5 | 40,0 | 2,8 |

Accessories

| | |
|-----------------|--|
| HK EBM AS | Proportional amplifier digital |
| HK SP DIN 43650 | Electrical plug for solenoid coil DIN 43650 / ISO 4400 |
| HK M HK DH | Screw set for NG 6 valves type HK DH / DG4V3 |