

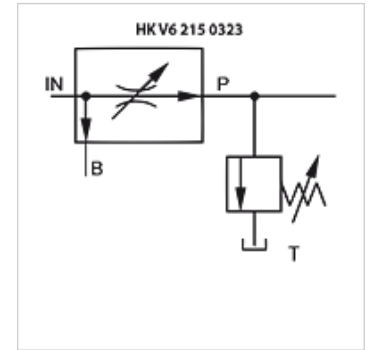
HK V6 215 DBV

Flow control valve with secondary pressure relief

HANSA FLEX

Properties

Design	pressure-compensated with additional secondary pressure relief valve
Material	Housing: Cast iron Inside parts of steel
Operating pressure	max. 250 bar



Note

These valves must be set according to the application.

Description

With these 3-way flow control valves, the preferred oil flow (P) is held constant irrespective of the incoming oil flow (IN). The residual oil flow (B) can be diverted to the tank or used for an ancillary consumer

Division: max. 75 % of quantity from IN to P, min. 5 l/min to P

Item

Identification	Thread IN/B	Thread P	Inlet max. (L/min)	Width (mm)	Height (mm)	Length (mm)	Weight (kg)
HK V6 215 0321	G 1/2"	G 3/8"	40	65	110	87	1,40
HK V6 215 0323	G 3/4"	G 1/2"	70	80	125	106	1,84