

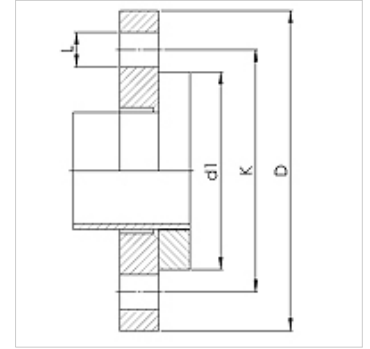
WA LF PN6

Connector ... LF, PN 6, steel

HANSA FLEX

Properties

Application	Connection fitting for metal hoses
Connection 1	plain collar with loose flange at pressure rating PN6
Sealing form 1	flat sealing
Standard	DIN 2641 DIN EN 1092-1
Application	soldered variant temperature resistant up to 200 °C welded variant in stainless steel temperature resistant up to 550 °C
Construction	straight
Material	Stainless steel pipe socket Steel collar Steel loose flange



Ordering information

Other designs available on request

Item						
Identification	DN	PN (bar)	D (mm)	d1 (mm)	K (mm)	L (mm)
WA 010 LF PN6	10	6	75	35	50	11
WA 013 LF PN6	13	6	80	40	55	11
WA 020 LF PN6	20	6	90	50	65	11
WA 025 LF PN6	25	6	100	60	75	11
WA 032 LF PN6	32	6	120	70	90	14
WA 040 LF PN6	40	6	130	80	100	14
WA 050 LF PN6	50	6	140	90	110	14
WA 065 LF PN6	65	6	160	110	130	14
WA 080 LF PN6	80	6	190	128	150	18
WA 100 LF PN6	100	6	210	148	170	18
WA 125 LF PN6	125	6	240	178	200	18
WA 150 LF PN6	150	6	265	202	225	18

Product versions

WA LF PN6 VA Connector ... LF, PN 6, VA, Stainless steel pipe socket