

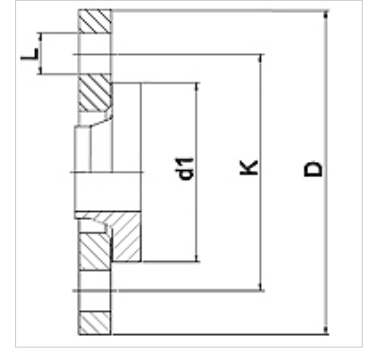
WA LF PN10

Connector ... LF, PN 10, steel

HANSA FLEX

Properties

| | |
|-----------------------|---|
| Application | Connection fitting for metal hoses |
| Connection 1 | Short stub end with loose flange at pressure rating PN10 |
| Sealing form 1 | flat sealing |
| Standard | DIN 2673 DIN EN 1092-1 |
| Application | soldered variant temperature resistant up to 200 °C welded variant in stainless steel temperature resistant up to 550 °C |
| Construction | straight |
| Material | Steel collar Steel loose flange |



Ordering information

Other designs available on request

| Item | DN | PN (bar) | D (mm) | d1 (mm) | K (mm) | L (mm) |
|----------------|-----|----------|--------|---------|--------|--------|
| WA 010 LF PN10 | 10 | 10 | 90 | 40 | 60 | 14 |
| WA 013 LF PN10 | 13 | 10 | 95 | 45 | 65 | 14 |
| WA 020 LF PN10 | 20 | 10 | 105 | 58 | 75 | 14 |
| WA 025 LF PN10 | 25 | 10 | 115 | 68 | 85 | 14 |
| WA 032 LF PN10 | 32 | 10 | 140 | 78 | 100 | 18 |
| WA 040 LF PN10 | 40 | 10 | 150 | 88 | 110 | 18 |
| WA 050 LF PN10 | 50 | 10 | 165 | 102 | 125 | 18 |
| WA 065 LF PN10 | 65 | 10 | 185 | 122 | 145 | 18 |
| WA 080 LF PN10 | 80 | 10 | 200 | 138 | 160 | 18 |
| WA 100 LF PN10 | 100 | 10 | 220 | 158 | 180 | 18 |
| WA 125 LF PN10 | 125 | 10 | 250 | 188 | 210 | 18 |
| WA 150 LF PN10 | 150 | 10 | 285 | 212 | 240 | 22 |

Product versions

WA LF PN10 VA Connector ... LF, PN 10, VA, Stainless steel collar